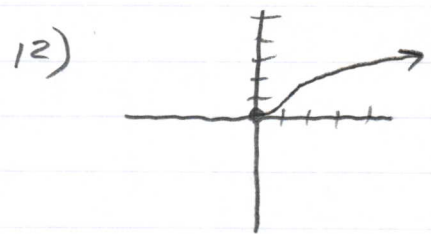
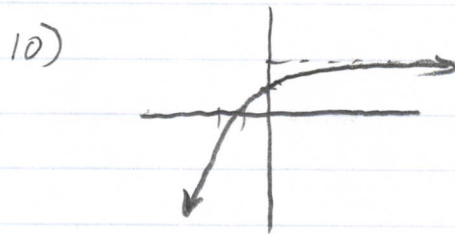
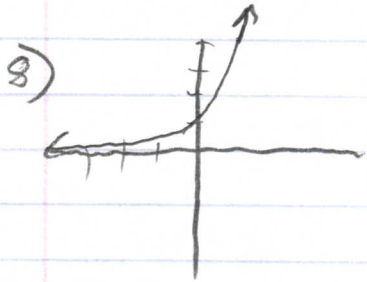


Chapter 3 Review

pg 353

2) F 4) b 6) c



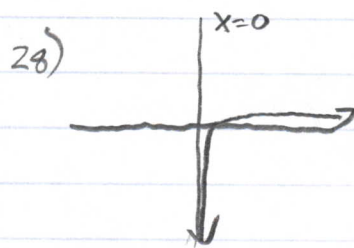
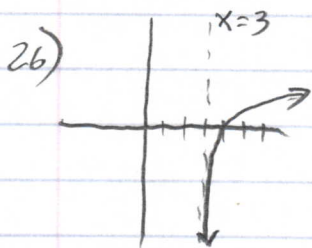
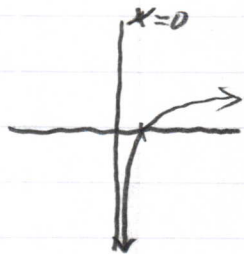
16) 59,919.84
65,975.38
60,421.97
71,899.28
73,153.17
73,196.47

18) 181042.49
73881.39
27292.30
10081.97
3724.35
1375.80

20) b) 7875
c) beginning
Yes.

22) 28
26.4
24.8
23.4
22.0

24)



32) $\log_{25} 125 = \frac{3}{2}$

36) -1

34) $\frac{1}{2}$

38) -2.322

40) -1.159

42) $\frac{1}{2} \log_7 x - \log_7 4$

48) $\ln \left| \frac{(x-2)^5}{(x+2)x^3} \right|$

54) False

44) $\ln|x-1| - \ln|x+1|$

50) True

56) a) [0, 18000]

⊕ 5.46 min

46) $\log_6 \frac{y}{z^2}$

52) False

58) {1.073}

70) {2.45}

78) $10^{-3.5}$ watts/cm²

60) {0.563}

72) {0, .416, 13.63}

62) {1.386, 0.493}

64) {452.011}

74) $y = \frac{1}{2} e^{0.4105x}$

66) {53.598}

68) { $\frac{9}{10}$ }

76) 7.7 weeks, 13.3 weeks